

**DESIGN**

Tuesday June 21, 2016

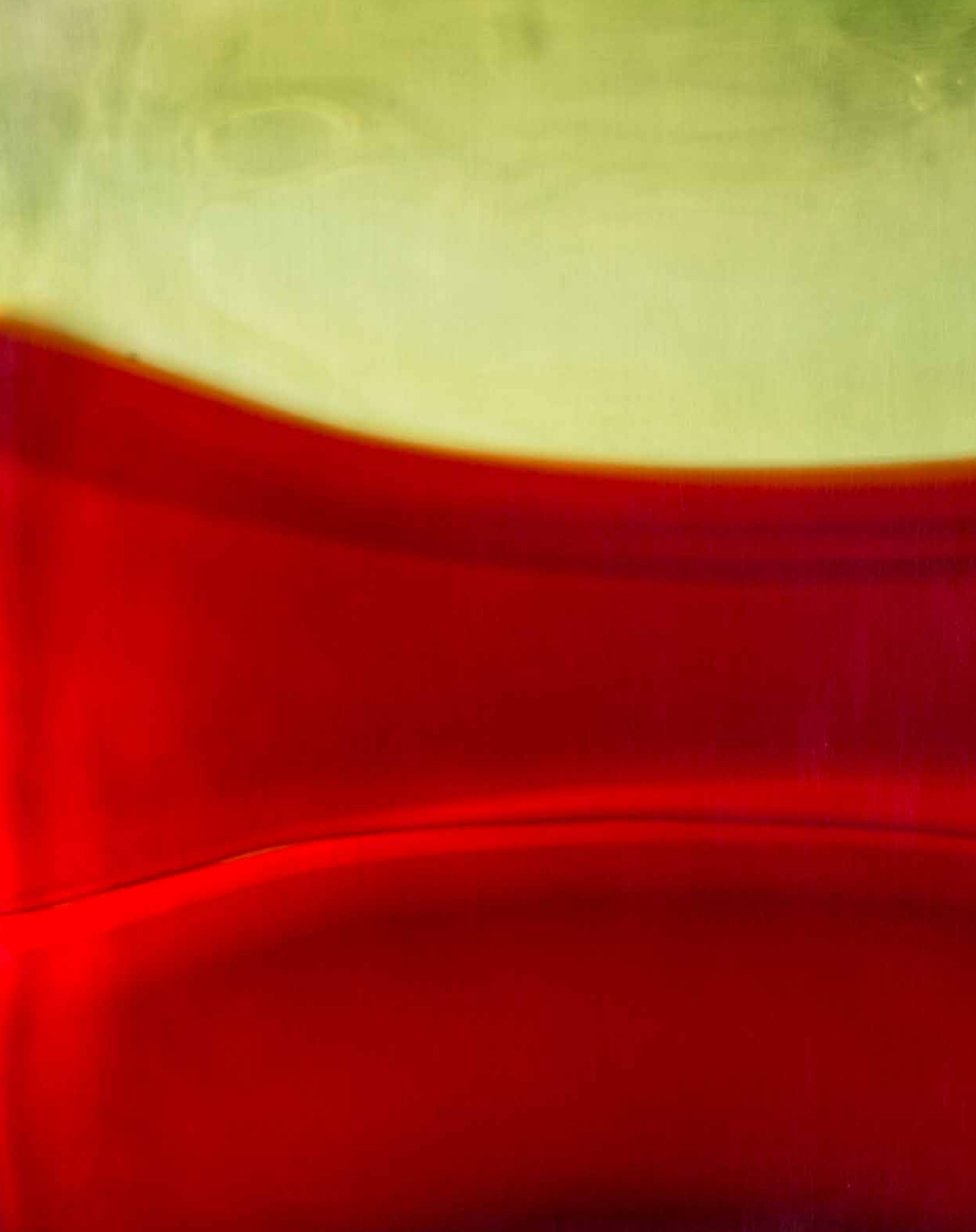


**Bonhams**

NEW YORK







# DESIGN

Tuesday June 21, 2016 at 1pm  
New York

## BONHAMS

580 Madison Avenue  
New York, New York 10022  
[bonhams.com](http://bonhams.com)

## PREVIEW

Saturday June 18, 12pm to 5pm  
Sunday June 19, 12pm to 5pm  
Monday June 20, 10am to 5pm  
Tuesday June 21, 10am to 1pm

## BIDS

+1 (212) 644 9001  
+1 (212) 644 9009 fax

To bid via the internet please visit  
[www.bonhams.com/23409](http://www.bonhams.com/23409)

Please note that telephone bids must be submitted no later than 4pm on the day prior to the auction. New bidders must also provide proof of identity and address when submitting bids. Telephone bidding is only available for lots with a low estimate in excess of \$1000.

Please contact client services with any bidding inquiries.

Please see pages 2 to 6 for bidder information including Conditions of Sale, after-sale collection and shipment.

**SALE NUMBER:** 23409

**CATALOG:** \$35

## INQUIRIES

Dan Tolson, Director  
+1 (212) 710 1306  
+1 (212) 644 9007 fax  
[dan.tolson@bonhams.com](mailto:dan.tolson@bonhams.com)

Angela Past, Senior Specialist  
+1 (323) 436 5422  
+1 (323) 850 5843 fax  
[angela.past@bonhams.com](mailto:angela.past@bonhams.com)

Kate Cebalo, Business Manager  
+1 (323) 436 5434  
[kate.cebalo@bonhams.com](mailto:kate.cebalo@bonhams.com)

Automated Results Service  
+1 (800) 223 2854

## ILLUSTRATIONS

Front cover: Lot 39  
Inside front cover: Lot 51  
Inside back cover: Lot 37 (detail)  
Opposite: Lot 35 (detail)  
Back cover: Lot 63





PROPERTY OF VARIOUS OWNERS

1

**IVAN MESTROVIC (1883-1962)**

Marko Kraljevic on Sarac, 1933

patinated bronze

height 33in (84cm); width 23 1/2in (59.5cm); depth 10in (25.5cm)

US\$15,000 - 25,000

**Provenance**

The Arcade Gallery, London, 1977;

Paul Hanna;

Thence by descent

Another model was commissioned by King Aleksandar of Serbia as a version of the monumental example presented at the Art Pavilion of Serbia at the International Exhibition, Rome, 1911 and is now in the Collection of the Royal Family of Serbia.





2

**KARL HAGENAUER (1898-1956)**

Pair of Bird and Grapevine candelabra, circa 1950  
for Hagenauer Werkstätte, brass, each marked *WHW*  
heights approximately 13 1/2in (34.29cm);  
widths approximately 9 1/2in (24.13cm) (2)

US\$4,000 - 6,000

**Literature**

Monika Wenzl-Bachmayer, *Hagenauer WHW: Wiener Moderne  
Neue Sachlichkeit*, Remaprint, Vienna, 2011, page 28  
(model variant illustrated)

3

**FRANK LLOYD WRIGHT (1867-1959)**

Nakoma, 1924  
glazed terracotta  
height 15 1/2in (39.5cm); width 5 1/4in (13cm); depth 3 1/2in (9cm)

US\$8,000 - 12,000

**Provenance**

Presented to Paul and Jean Hanna by Frank Lloyd Wright on  
completion of the *Hanna Honeycomb House*, Stanford University,  
California, in 1937;  
Thence by descent





4

**JOSEF HOFFMANN (1870-1956)**

Pair of lounge chairs, circa 1905

*model 720, for J. & J. Kohn*

ebonized beech, brass, upholstery

manufacturer's paper label to underside of one *Jacob & Josef Kohn*

*Wien*, and remnants of manufacturer's label to other

*height 28 1/4in (72cm); width 22 3/4in (58cm); depth 23 1/4in (59cm)*

(2)

US\$7,000 - 9,000

**Provenance**

Acquired from Galerie Georg Kargl, Vienna, Austria

5

**JOSEF HOFFMANN (1870-1956)**

Pair of stools, circa 1907

*for J. & J. Kohn*

ebonized beech, upholstery

*height 20 1/2in (52cm); diameter 14 3/4in (37.5cm)*

(2)

US\$2,000 - 4,000

**Provenance**

Acquired from Galerie Georg Kargl, Vienna, Austria



4

5

6

**ARCHIBALD KNOX (1864-1933)**

Pair of Cymric candlesticks: The Conister, 1901  
for Liberty & Co.

silver, hallmarked for Liberty & Co, *CYMRIC*,  
additionally inscribed *1873H Wd/N/pm pan*  
height 9 5/8in (24.4cm) (2).

**US\$15,000 - 25,000**

**Literature**

Stephen Martin, *Archibald Knox*, Academy Editions, 1995,  
Page 33 (model illustrated in 1899 Cymric silver catalog),  
and page 112 (color photograph).

7

**ARCHIBALD KNOX (1864-1933)**

Pair of candelabra, 1901  
for Liberty & Co.

pewter, impressed *MADE IN ENGLAND ENGLISH PEWTER*  
*0530 Rd 459548 SOLKETS 4*  
height 11in (28cm); width 9in (22cm) (2)

**US\$4,000 - 6,000**

**Literature**

Stephen Martin, *Archibald Knox*, Academy Editions, 1995,  
113 for a color photograph

8

**ARCHIBALD KNOX (1864-1933)**

Cymric claret jug, 1901

silver, hallmarked and impressed *CYMRIC*, later inscribed *T & CO*  
height 9 5/8in (24.5cm).

**US\$6,000 - 8,000**

This model was designed for Liberty & Co.



6



7



8



9

**LOUIS ERNEST BARRIAS, FRENCH (1841 - 1905)**

*La Nature Se Dévoilant Devant La Science*, circa 1900

*Susse Frères foundry*

a patinated and cold painted bronze figure, on later marble base,  
the base signed to one side *E. Barrias* and to the other *Susse Frères*  
*Edts Paris J* and with pastille  
height 18 1/2in (46cm); width 9 1/2in (24cm); depth 7 1/2in (19cm)

US\$10,000 - 15,000



PROPERTY FROM A FLORIDA PRIVATE COLLECTION

10

**RAYMOND SUBES (1891-1970)**

Console table, circa 1925

wrought-iron, patinated bronze and marble

height 37in (94cm); length 88in (223.5cm); depth 21 3/4in (55.5cm)

US\$15,000 - 20,000

**Provenance**

Acquired from D. Leonard & Garry Trent Gallery, New York, 1985



PROPERTY OF VARIOUS OWNERS

11

**TIFFANY STUDIOS (1899-1918)**

Fern mirror, circa 1910  
patinated bronze and mirrored glass,  
impressed *TIFFANY STUDIOS NEW YORK 900*  
height 21 1/4in (54cm); width 22 1/4in (56.5cm);  
depth 9 3/4in (24.8cm)

US\$20,000 - 30,000

**Literature**

Alastair Duncan, *Tiffany at Auction*, Rizzoli, 1981,  
page 46, item no. 126

Alastair Duncan, *Tiffany Lamps and Metalware*,  
Antique Collector's Club, page 402 plate #1628.





PROPERTY FROM A FLORIDA  
PRIVATE COLLECTION

12

**TIFFANY STUDIOS (1899-1918)**

Eighteen-Light Lily lamp, circa 1910

Favrile glass and patinated bronze, the base  
impressed *TIFFANY STUDIOS NEW YORK 382*,  
thirteen shades signed *L.C.T. Favrile*, five shades  
signed *L.C.T.*

height 23 1/2in (59.7cm); height of shades 4 1/4in  
to 4 3/4in (11cm to 12.2cm)

US\$40,000 - 60,000

**Provenance**

Acquired from Macklowe Gallery, New York







PROPERTY OF VARIOUS OWNERS

13

**TIFFANY STUDIOS (1899-1918)**

Dogwood hanging shade, circa 1905

leaded glass and patinated bronze, tag impressed  
*TIFFANY STUDIOS NEW YORK*, later-added model  
tag impressed 605-2, with original chain and hook  
height of shade to top of loop 16 1/2in (42cm);  
drop 47 1/2in (120.5cm); diameter 28 3/4in (73cm)

US\$70,000 - 100,000



14

**RENÉ LALIQUE (1860-1945)**

Oranges, circa 1925

vase, model no. 464

black enameled and clear glass, *R. Lalique* molded  
in intaglio and engraved *R. Lalique France Nr.464*  
height 11in (28cm); diameter 11in (28cm)

US\$20,000 - 30,000





15

**TIFFANY STUDIOS (1899-1918)**

Twelve-Light Lily lamp, circa 1910

Favrile glass and patinated bronze

base impressed *TIFFANY STUDIOS*

*NEW YORK 382*, nine shades signed *L.C.T.*,

one shade signed *L.C.T. Favrile*, two unsigned

height 21in (53.4cm)

US\$20,000 - 30,000



16

**ANDRÉ ARBUS (1903-1969)**

Set of twelve dining chairs, circa 1950  
sycamore, gilt-bronze, leather upholstery; *together with two*  
*of later manufacture*  
*height 36in (91.5cm); width 19 1/2in (49.5cm);*  
*depth 19 1/2in (49.5cm)*  
(14)

**US\$18,000 - 25,000**

**Provenance**

Acquired from Newel Gallery, New York, 1994

**Literature**

Yvonne Brunhammer, *André Arbus, Architecte-Décorateur des*  
*Années 40*, Editions Norma, Paris, 1996, page 309  
(associated table model illustrated).





17

**JEAN ROYÈRE (1902-1981)**

Pair of Corbeille three light sconces, circa 1940  
gilt wood and metal, fabric shades  
height 15in (38cm); width 12in (30.5cm); deep 7 1/4in (18.7cm)  
(2)

US\$15,000 - 25,000

**Provenance**

Acquired from Gomez Associates, New York

**Literature**

Pierre-Emmanuel Martin-Vivier, *Jean Royère*, Editions Norma,  
Paris, 2002, page 200 (model variant illustrated).

18

**JULES LELEU (1883-1961)**

Console table, circa 1938  
mahogany, mother-of-pearl and ebony inlay, gilt bronze mounts,  
marble, mirror plate  
height 37 1/2in (95.5cm); width 72 1/2in (184cm);  
depth 16 1/2in (42cm)

US\$6,000 - 8,000

**Provenance**

Acquired from Gomez Associates, New York









PROPERTY FROM A FLORIDA PRIVATE COLLECTION

19

**JULES LELEU (1883-1961)**

Cabinet, circa 1938

gilt bronze, mother of pearl, and parquetry

with ivory inlaid signature seal

height 57in (144.8cm); width 75 1/2in (191.8cm); depth 17in (43.2cm)

US\$15,000 - 20,000

**Provenance**

Acquired from Fred Silberman Gallery, New York, 1985

**Literature**

Bruno Foucart, Jean-Louis Gaillemin, *Le Décorateurs des Années 40*, Editions Norma, Paris, 1998, page 135 (model variant illustrated).







20

**DIEGO GIACOMETTI (1902-1985)**

Table Torsade

patinated bronze and glass low table

conceived circa 1965, signed *Diego* ten times on the cross bars and lateral struts, accompanied by a copy of the August 21, 1985 invoice from the Marisa del Re gallery

height 16 1/8in (41cm); width 48 1/2in (123.1cm);

depth 30 1/4 (77cm)

US\$200,000 - 300,000

**Provenance**

Acquired from Marisa del Re Gallery, New York, August 21, 1985

**Literature**

Françoise Francisci, *Diego Giacometti, Catalogue de l'oeuvre, volume I*, Paris, 1986, page 116.

Daniel Marchesseau, *Diego Giacometti*, Harry N Abrams, Paris, 1986, page 65.



PROPERTY OF VARIOUS OWNERS

21

**ANDRÉ ARBUS (1903-1969)**

Armchair, circa 1948

mahogany, bronze, upholstery

height 33 1/4in (84.5cm); width 27 1/2in (70cm); depth 26 1/2in (67.5cm)

US\$10,000 - 15,000

**Provenance**

Acquired from Newel Gallery, New York

**Literature**

Yvonne Brunhammer, *André Arbus, Architecte-Décorateur des Années 40*, Editions Norma, Paris, 1996, page 371 (associated chaise-longue model illustrated).



21



22

22

**LOUIS SÛE (1875-1968) AND ANDRÉ MARE (1887-1932)**

Guéridon, circa 1925

mahogany, marble

height 29 3/4in (75.5cm); 28in (71cm)

US\$5,000 - 7,000

**Provenance**

Acquired from Calderwood Gallery, Philadelphia, Pennsylvania

**Literature**

Pierre Kjellberg, *Art Déco, Les Maîtres du Mobilier, Le Décor des Paquebots*, Les Éditions du Regard, Paris, 1998, page 235 (model variant illustrated).

23<sup>W</sup>

**EUGENE PRINTZ (1889-1948)**

Games table, circa 1925

walnut, oxidized brass, baize

height 29 3/4in (75cm); diameter 31 1/2in (80cm)

US\$30,000 - 50,000

**Literature**

Guy Bujon, Jean-Jacques Dutko, *Eugene Printz*, Editions du Regard, Paris, 1986, page 114.



24

**SERGE MOUILLE (1922-1988)**

Agrafée Simple, circa 1960  
designed 1957, for Ateliers Serge Mouille  
enameled steel, enameled aluminum, brass  
height 31in (79cm); width 11in (28cm);  
depth 4 5/8in (11.8cm)

US\$3,000 - 5,000

**Provenance**

Private Collection, Europe

24

25

**PIERRE JEANNERET (1896-1967)**

Student desk, circa 1960  
model PJ-BU-08-B, teak, painted mark to stretcher  
CET/TL/T-100  
height 28 2/8in (71.6cm); width 46 1/2in (118cm);  
depth 24in (61cm)

US\$4,000 - 5,000

**Provenance**

Private European Collection;  
College of Architecture, Punjab University, and  
various education buildings, Chandigarh, India

**Literature**

Eric Touchaleaume, Gerald Moreau, *Le Corbusier, Pierre Jeanneret, The Indian Adventure, Design-Art-Architecture*, Editions Eric Touchaleaume, Paris, 2010, page 573. Hélène Bauchet-Cauquil, Françoise-Claire Prodhon, Patrick Seguin, *Le Corbusier, Pierre Jeanneret, Chandigarh, India, 1951-66*, Galerie Patrick Seguin, 2014, page 288 (model variant with drawers illustrated)

25

26

**PIERRE JEANNERET (1896-1967)**

Pair of Low Caned stools, circa 1955-56  
model PJ-S1-34-A, rattan, teak  
height 15 1/2in (39cm); width 16 3/4in (42.5cm);  
depth 11 1/4in (28.5cm) (2)

US\$5,000 - 7,000

**Provenance**

Private European Collection;  
M.L.A. Hostel/Flats, Chandigarh, India

**Literature**

Eric Touchaleaume, Gerald Moreau, Le Corbusier, Pierre Jeanneret, *The Indian Adventure, Design-Art-Architecture*, Editions Eric Touchaleaume, Paris, 2010, page 565. Hélène Bauchet-Cauquil, Françoise-Claire Prodhon, Patrick Seguin, *Le Corbusier, Pierre Jeanneret, Chandigarh, India, 1951-66*, Galerie Patrick Seguin, 2014, page 284.

26



27

**PIERRE JEANNERET (1896-1967)**

Pair of Easy Armchairs, circa 1955-56  
model PJ-S1-29-A, teak, rattan,  
fabric upholstered cushions,  
painted mark to seat rail of each PSA/CH/100,  
and PSA/CH/81  
height 29 1/4in (74.5cm); width 23in (58.5cm);  
depth 21in (53.5cm) (2)

US\$8,000 - 12,000

An example of this model is held in the permanent  
collection of the Swiss National Museum, Zurich

**Provenance**

Private European Collection;  
General Hospital, Punjab University, and  
Administrative buildings, Chandigarh, India

**Literature**

Eric Touchaleaume, Gerald Moreau, *Le Corbusier,  
Pierre Jeanneret, The Indian Adventure, Design-  
Art-Architecture*, Editions Eric  
Touchaleaume, Paris, 2010, page 563.  
Hélène Bauchet-Cauquil, Françoise-Claire  
Prodhon, Patrick Seguin, *Le Corbusier,  
Pierre Jeanneret, Chandigarh, India, 1951-66*,  
Galerie Patrick Seguin, 2014, page 283.

28

**PIERRE JEANNERET (1896-1967)**

Coffee table, circa 1960  
model PJ-TB-05-B, teak, glass,  
painted mark PSA/T-47  
height 15 1/2in (39.5cm); width 50in (127cm);  
depth 18in (45.5cm)

US\$7,000 - 9,000

**Provenance**

Private European Collection;  
Legislative Assembly, University of Punjab, and  
various administrative buildings, Chandigarh, India

**Literature**

Eric Touchaleaume, Gerald Moreau, *Le Corbusier,  
Pierre Jeanneret, The Indian Adventure, Design-  
Art-Architecture*, Editions Eric Touchaleaume,  
Paris, 2010, page 589. Hélène Bauchet-Cauquil,  
Françoise-Claire Prodhon, Patrick Seguin,  
*Le Corbusier, Pierre Jeanneret, Chandigarh, India,  
1951-66*, Galerie Patrick Seguin, 2014, page 287.

28

27

29

**LE CORBUSIER (1887-1965)**

Standard lamp, circa 1955-56  
model PJ-LU-04-B, for Guilux, teak, enameled aluminum  
height 69 3/8in (176cm); width 22 1/2in (57cm);  
depth 16 7/8in (42.5cm)

US\$10,000 - 15,000

**Provenance**

Private European Collection;  
Private residences, M.L.A. Hostels and Flats

**Literature**

Eric Touchaleaume, Gerald Moreau, *Le Corbusier, Pierre Jeanneret, The Indian Adventure, Design-Art-Architecture*, Editions Eric Touchaleaume, Paris, 2010, page 598.

30

**PIERRE JEANNERET (1896-1967)**

Daybed, circa 1957-58  
model PJ-L-12-A, teak, upholstery  
height 14 1/2in (37cm); width 78in (198cm); deep 31 1/2in (80cm)

US\$8,000 - 10,000

**Provenance**

Private European Collection;  
Private residences and various buildings, Chandigarh, India

**Literature**

Eric Touchaleaume, Gerald Moreau, *Le Corbusier, Pierre Jeanneret, The Indian Adventure, Design-Art-Architecture*, Editions Eric Touchaleaume, Paris, 2010, page 591.  
Hélène Bauchet-Cauquil, Françoise-Claire Prodhon, Patrick Seguin, *Le Corbusier, Pierre Jeanneret, Chandigarh, India, 1951-66*, Galerie Patrick Seguin, 2014, page 282.

29

30

31

**PIERRE JEANNERET (1896-1967)**

Pair of High Stools, circa 1960

modl PJ-S1-56-A, teak,

painted mark to each *P.U./PHY/115* and *P.U./PHY/99*

height 27in (68.5cm); width 16 1/2in (42cm); 15in (38cm) (2)

US\$7,000 - 10,000

**Provenance**

Private European Collection;

Science department, University of Punjab, Chandigarh, India

**Literature**

Eric Touchaleaume, Gerald Moreau, *Le Corbusier, Pierre Jeanneret, The Indian Adventure, Design-Art-Architecture*,

Editions Eric Touchaleaume, Paris, 2010, page 570.

Hélène Bauchet-Cauquil, Françoise-Claire Prodhon, Patrick Seguin, *Le Corbusier, Pierre Jeanneret, Chandigarh, India, 1951-66*,

Galerie Patrick Seguin, 2014, page 285.





32

**PIERRE JEANNERET (1896-1967)**

File Rack, circa 1957

model PJ-R-27-A, sissoo

height 28 1/8in (71.5cm); width 47 7/8in (212.5cm);

depth 14 5/8in (37cm)

**US\$8,000 - 12,000**

**Literature**

Eric Touchaleaume, Gerald Moreau, *Le Corbusier, Pierre Jeanneret, The Indian Adventure, Design-Art-Architecture*, Editions Eric Touchaleaume, Paris, 2010, page 596-7.

**Provenance**

Private European Collection;  
Chandigarh, India



33

**PIERRE JEANNERET (1896-1967)**

Screen, circa 1957-58  
model PJ-DIVERS-01-A, teak, fabric,  
painted mark to one panel PSA/SCN-23  
each panel height 66in (167.5cm); width 22in (56cm);  
depth 1 1/2in (4cm)

US\$5,000 - 7,000

**Provenance**

Private European Collection;  
Secretariat, Legislative Assembly, University of Punjab  
and various administrative buildings, Chandigarh, India

**Literature**

Eric Touchaleaume, Gerald Moreau, *Le Corbusier, Pierre Jeanneret, The Indian Adventure, Design-Art-Architecture*, Editions Eric Touchaleaume, Paris, 2010, page 597.  
Hélène Bauchet-Cauquil, Françoise-Claire Prodhon, Patrick Seguin, *Le Corbusier, Pierre Jeanneret, Chandigarh, India, 1951-66*, Galerie Patrick Seguin, 2014, page 289.

34

**LE CORBUSIER (1887-1965),  
AND PIERRE JEANNERET (1896-1967)**

Pair of Advocate chairs, circa 1955-56  
model LC/PJ-S1-41-A, teak, upholstery, painted mark to each  
height 35 1/2in (90cm); width 27in (68.5cm); depth 26in (66cm) (2)

US\$12,000 - 15,000

**Provenance**

Private European Collection;  
High Court and Assembly, Chandigarh, India

**Literature**

Eric Touchaleaume, Gerald Moreau, *Le Corbusier, Pierre Jeanneret, The Indian Adventure, Design-Art-Architecture*, Editions Eric Touchaleaume, Paris, 2010, page 567.  
Hélène Bauchet-Cauquil, Françoise-Claire Prodhon, Patrick Seguin, *Le Corbusier, Pierre Jeanneret, Chandigarh, India, 1951-66*, Galerie Patrick Seguin, 2014, page 282.



35

**LAURA DE SANTILLANA (BORN 1955)**

(Untitled) vase, 2002

sommerso glass, engraved to underside *Laura de Santillana*, 2002  
height 16 3/4in (42.5cm); width 17 1/2in (44.5cm); depth 2in (5cm)

US\$4,000 - 6,000

36

**RUTH DUCKWORTH (1919-2009)**

Two Piece Form, 1998

porcelain, underside incised 598398

height 7 1/4in (18.5cm); width 6 1/4in (16cm); depth 6 1/4in (16cm)

US\$3,000 - 5,000



35

36



37

**DAME LUCIE RIE (1902-1995)**

Large Conical Bowl, circa 1978

porcelain, manganese glaze, sgraffito design,  
impressed monogram seal to underside *LR*  
height 4 1/4in (11cm); diameter 8 7/8in (22.7cm)

US\$10,000 - 15,000



38

**HANS COPER (1920-1981)**

Ovoid Volume, circa 1968

glazed stoneware, interior with manganese glaze,  
monogram seal to underside *HC*  
*height 8 1/2in (21.5cm); width 6 1/2in (16.5cm);  
depth 5 1/4in (13.5cm)*

US\$15,000 - 20,000



39

**HANS COPER (1920-1981)**

Composite Form with Vertical Impression, circa 1969  
glazed stoneware, interior with manganese glaze,  
monogram seal HC to underside  
*height 12in (30.5cm) | width 8 1/2in (21.5cm);  
depth 8 1/2in (21.5cm)*

US\$18,000 - 25,000







PROPERTY FROM THE ESTATE OF  
SYLVIA AND ERIC ELSESSER, SAN FRANCISCO

40<sup>W</sup> □

**WILLIAM MORRIS (BORN 1957)**

Canopic Jar: Panther, 1992

blown glass, jar and cover inscribed *William Morris 1992*

height 31in (79cm); width 10in (25.5cm); depth 10in (25.5cm)

US\$60,000 - 80,000

**Literature**

Gary Blonston, *William Morris artifacts/glass*, Abbeville Press,  
New York, 1996, page 85 (this example illustrated).





PROPERTY OF VARIOUS OWNERS

41

**JOHN CEDERQUIST (BORN 1946)**

Skyways Kimono cabinet, 2007-10

*from the Heavenly Victory series*

birch plywood, various hardwoods, pigmented epoxy resin, aniline dye,  
litho inks, inlaid large kanji characters mean Heavenly Victory,  
the small katakana characters are phonetic for JC  
height 70 3/4in (179.5cm); width 53 1/2in (136cm);  
depth 19 1/2in (49.5cm)

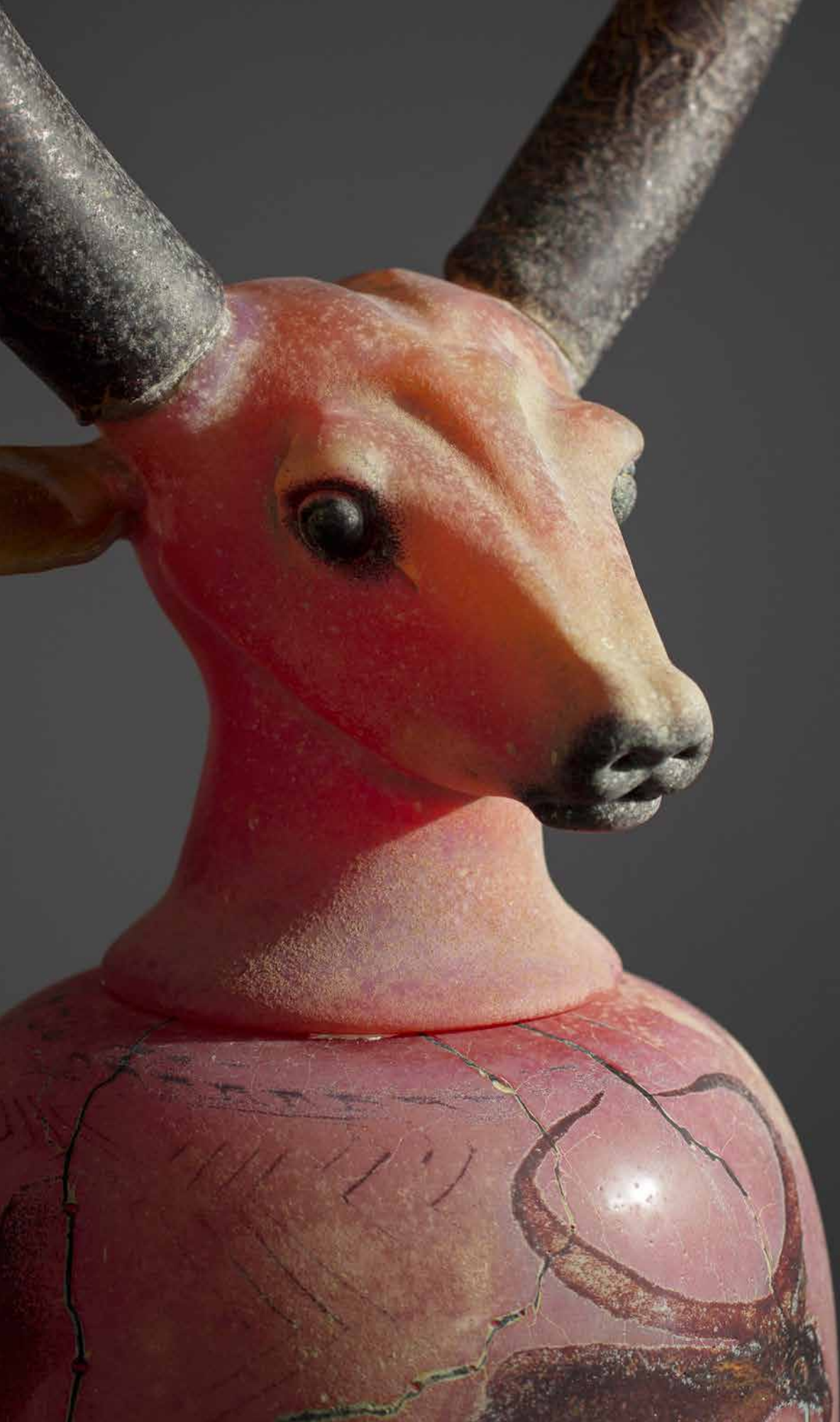
US\$7,000 - 9,000











PROPERTY FROM THE ESTATE OF  
SYLVIA AND ERIC ELSESSER, SAN FRANCISCO

42<sup>a</sup>

**WILLIAM MORRIS (BORN 1957)**

Canopic Jar: African Bull, 1995

blown glass, jar and cover inscribed *William Morris 1995*  
overall height 43 1/4in (110cm); width 12in (30.5cm);  
approximate depth 16in (40.7cm)

US\$70,000 - 90,000

**Literature**

Gary Blonston, *William Morris artifacts/glass*, Abbeville Press,  
New York, 1996, page 27 (this example illustrated).







PROPERTY OF VARIOUS OWNERS

43

**SERGE MOUILLE (1922-1988)**

Pair of Petite Saturne wall appliques, circa 1960  
designed 1958, for Ateliers Serge Mouille  
enameled steel, enameled aluminum, brass  
height 11 7/8in (30cm); width 9 1/2in (24cm); depth 9in (23cm) (2)

US\$4,000 - 6,000

**Provenance**

Private Collection, Europe

**Literature**

Christine and Alan Conour, *Serge Mouille Luminaires*,  
Le Regard d'Alan Editions, Paris, 1993, unpaginated.



**PIERRE JEANNERET (1896-1967)**

Set of eight Chairs V Type Cane Seat Cane Back, circa 1958-59  
 model PJ-S1-25-A, rattan, teak, upholstered seat cushions,  
 painted alpha numeric marks to seat rail of each  
 height 33 1/4in (84.5cm); width 20 1/2in (52cm); depth 17in (43cm) (8)

**US\$18,000 - 22,000**

An example of the model is held in the permanent collection of the  
 Swiss National Museum, Zurich

**Provenance**

Private European Collection;  
 Hostel for Girls, 1959, Hostel for Boys, 1961, University of Punjab,  
 Chandigarh, India

**Literature**

Eric Touchaleaume, Gerald Moreau, *Le Corbusier, Pierre Jeanneret,  
 The Indian Adventure, Design-Art-Architecture*, Editions Eric  
 Touchaleaume, Paris, 2010, page 561.  
 Hélène Bauchet-Cauquil, Françoise-Claire Prodhon, Patrick Seguin,  
*Le Corbusier, Pierre Jeanneret, Chandigarh, India, 1951-66*, Galerie  
 Patrick Seguin, 2014, page 284.





45<sup>W</sup>

**GEORGE NAKASHIMA (1905-1990)**

Set of six Grass-Seated chairs, circa 1960

American black walnut, sea-grass

height 27 1/4in (69cm); width 22 1/4in (56cm); depth 18in (6)

US\$7,000 - 10,000



46

**SERGE MOUILLE (1922-1988)**

Agrafée deux rotules, circa 1960  
designed 1957, for Ateliers Serge Mouille  
enameled steel, enameled aluminum, brass  
height 23in (58.5cm); width 11in (28cm); depth 4 5/8in (11.8cm)

US\$4,000 - 6,000

**Provenance**

Private Collection, Europe

47

**PIERRE JEANNERET (1896-1967)**

Demountable desk, circa 1957-58  
model PJ-BU-15-A, teak, aluminum,  
painted mark to side of top *PI/PATH.09*  
height 28 1/4in (71.2cm); width 72 1/2in (184cm);  
depth 66in (167.5cm)

US\$20,000 - 30,000

**Provenance**

Private European Collection;  
Secretariat, and administrative buildings, Chandigarh, India

**Literature**

Eric Touchaleaume, Gerald Moreau, *Le Corbusier, Pierre Jeanneret, The Indian Adventure, Design-Art-Architecture*, Editions Eric Touchaleaume, Paris, 2010, page 576.  
Hélène Bauchet-Cauquil, Françoise-Claire Prodhon, Patrick Seguin, *Le Corbusier, Pierre Jeanneret, Chandigarh, India, 1951-66*, Galerie Patrick Seguin, 2014, page 288.

46

47

**PIERRE JEANNERET (1896-1967)**

Pair of Upholstered Office Easy armchairs, circa 1958-59  
 model PJ-S1-32-A, teak, leather upholstery,  
 painted mark to each HC/C/67/014, and HC/C/79/014  
 height 35in (89cm); width 27in (68.5cm); depth 24in (61cm) (2)

US\$10,000 - 15,000

**Provenance**

Private European Collection;  
 High Court, Legislative Assembly, and various administrative buildings,  
 Chandigarh, India

**Literature**

Eric Touchaleaume, Gerald Moreau, *Le Corbusier, Pierre Jeanneret, The Indian Adventure, Design-Art-Architecture*, Editions Eric Touchaleaume, Paris, 2010, page 564.  
 Hélène Bauchet-Cauquil, Françoise-Claire Prodhon, Patrick Seguin, *Le Corbusier, Pierre Jeanneret, Chandigarh, India, 1951-66*, Galerie Patrick Seguin, 2014, page 283.





49

**PIERRE JEANNERET (1896-1967)**

Library table, circa 1955-56

model PJ-TAT-08-A, teak, sissoo

height 28 1/4in (71.5cm); width 96 1/4in (244.5cm);

depth 48 1/4in (122.5cm)

**US\$30,000 - 50,000**

**Provenance**

Private European Collection;

High Court and Library, University of Punjab, Chandigarh, India

**Literature**

Eric Touchaleaume, Gerald Moreau, Le Corbusier, Pierre Jeanneret, *The Indian Adventure*, Design-Art-Architecture, Editions Eric Touchaleaume, Paris, 2010, page 38.

Hélène Bauchet-Cauquil, Françoise-Claire Prodhon, Patrick Seguin, *Le Corbusier, Pierre Jeanneret, Chandigarh, India, 1951-66*, Galerie Patrick Seguin, 2014, page 286.



50

**PIERRE JEANNERET (1896-1967)**

Set of six Office Armchairs, circa 1953-54  
model PJ-S1-28-D, teak, rattan, upholstered seat cushions,  
original painted alpha numeric mark to seat rail of each  
height 31 1/2in (80cm); width 20in (51cm); depth 18 1/4in (46.5cm) (6)

US\$15,000 - 25,000

**Provenance**

Private European Collection;  
Secretariat, and administrative buildings, Chandigarh, India

**Literature**

Eric Touchaleaume, Gerald Moreau, *Le Corbusier, Pierre Jeanneret, The Indian Adventure, Design-Art-Architecture*, Editions Eric Touchaleaume, Paris, 2010, page 563.  
Hélène Bauchet-Cauquil, Françoise-Claire Prodhon, Patrick Seguin, *Le Corbusier, Pierre Jeanneret, Chandigarh, India, 1951-66*, Galerie Patrick Seguin, Paris, 2014, page 283.





51

**PIERRE JEANNERET (1896-1967)**

Pair of Kangourou fireside chairs, circa 1955  
model PJ-S1-59-A, rattan, teak, upholstered seat cushions,  
painted mark to stretcher of each SPW/VSEC/85  
height 24in (61cm); width 29in (74cm); depth 22in (56cm) (2)

**US\$25,000 - 30,000**

**Provenance**

Private European Collection;

Private residences, General Hospital entrance hall, Chandigarh, India

**Literature**

Eric Touchaleaume, Gerald Moreau, *Le Corbusier, Pierre Jeanneret, The Indian Adventure, Design-Art-Architecture*, Editions Eric Touchaleaume, Paris, 2010, page 571.

Hélène Bauchet-Cauquil, Françoise-Claire Prodhon, Patrick Seguin, *Le Corbusier, Pierre Jeanneret, Chandigarh, India, 1951-66*, Galerie Patrick Seguin, 2014, page 284.





52

**PIERRE JEANNERET (1896-1967)**

Kangourou settee, circa 1955

model PJ-S1-59-B, rattan, teak, upholstered seat cushion,

painted mark to seat rail SPW/VSEC/84

height 23 3/4in (56.5cm); width 43 1/2in (110.5cm); depth 22in (56cm)

US\$20,000 - 30,000

**Provenance**

Private European Collection;

Private residences and General Hospital, Chandigarh, India

**Literature**

Eric Touchaleaume, Gerald Moreau, *Le Corbusier, Pierre Jeanneret,*

*The Indian Adventure, Design-Art-Architecture,*

Editions Eric Touchaleaume, Paris, 2010, page 570

(the model illustrated in situ in period photograph).



53

**LE CORBUSIER (1887-1965),  
AND BALKRISHNA VITHALDAS DOSHI (BORN 1927)**

Console desk, circa 1960

black stained wood

height 30in (76cm); width 74 1/4in (188.5cm); depth 27 1/2in (70cm)

**US\$35,000 - 55,000**

**Provenance**

Private European Collection;

Various buildings, Chandigarh, India

**Literature**

Hélène Bauchet-Cauquil, Françoise-Claire Prodron, Patrick Seguin,

*Le Corbusier, Pierre Jeanneret, Chandigarh, India, 1951-66,*

Galerie Patrick Seguin, 2014, page 288.



54

**GEORGE NAKASHIMA (1905-1990)**

Pair of Conoid Chairs, circa 1970

American black walnut, oak

height 35 3/4in (91cm); width 20in (51cm); depth 19in (48.5cm) (2)

US\$4,000 - 6,000

55<sup>W</sup>

**SERGE MOUILLE (1922-1988)**

Simple floor lamp, circa 1960

designed 1953, for Ateliers Serge Mouille

enameled steel, enameled aluminum, brass

height 62 1/4in (158cm); width 29in (73.5cm); depth 14 3/8in (36.5cm)

US\$8,000 - 12,000

**Provenance**

Private Collection, Europe

**Literature**

Christine and Alan Conour, *Serge Mouille Luminaires*,  
Le Regard d'Alan Editions, Paris, 1993, unpaginated.



54



55



56

**PIERRE JEANNERET (1896-1967)**

Office chair, circa 1960

model PJ-S1-50-A, teak, leather upholstery,

painted mark to stretcher *PSA/C/34/02*

height 35 1/2in (90cm); width 22 1/2in (58cm); 21 1/2in (54.5cm)

**US\$5,000 - 7,000**

**Provenance**

Private European Collection;

Administrative buildings, Chandigarh, India

**Literature**

Eric Touchaleaume, Gerald Moreau, *Le Corbusier, Pierre Jeanneret,*

*The Indian Adventure, Design-Art-Architecture,*

Editions Eric Touchaleaume, Paris, 2010, page 569.

57

**PIERRE JEANNERET (1896-1967)**

Administrative desk, circa 1960

model PJ-BU-19-A, teak, aluminum

height 30in (76cm); width 45 1/4in (115cm); depth 28 1/4in (71.5cm)

**US\$8,000 - 12,000**

**Provenance**

Private European Collection;

Administrative buildings, Chandigarh, India

**Literature**

Eric Touchaleaume, Gerald Moreau, *Le Corbusier, Pierre Jeanneret,*

*The Indian Adventure, Design-Art-Architecture,* Editions Eric

Touchaleaume, Paris, 2010, page 577.

Hélène Bauchet-Cauquil, Françoise-Claire Prodron, Patrick Seguin,

*Le Corbusier, Pierre Jeanneret, Chandigarh, India, 1951-66,* Galerie

Patrick Seguin, 2014, page 288.



56



57

58

**PIERRE JEANNERET (1896-1967)**

Lounge suite, circa 1955-56

model PJ-S1 -36-A/B, comprising pair of armless easy chairs and low bench seat; teak, foal hide upholstery

sofa height 33 1/2in (85cm); width 55 1/2in (141cm); depth 26in (66cm); each chair 33 1/2in (85cm); 29in (73.5cm); 23in (58.5cm) (3)

US\$35,000 - 45,000

**Provenance**

Private European Collection;

High Court and University of Punjab, Chandigarh, India

**Literature**

Eric Touchaleaume, Gerald Moreau, *Le Corbusier, Pierre Jeanneret, The Indian Adventure, Design-Art-Architecture*,

Editions Eric Touchaleaume, Paris, 2010, page 565.

Hélène Bauchet-Cauquil, Françoise-Claire Prodhon, Patrick Seguin,

*Le Corbusier, Pierre Jeanneret, Chandigarh, India, 1951-66*,

Galerie Patrick Seguin, 2014, page 283.



59

**LE CORBUSIER (1887-1965),  
AND PIERRE JEANNERET (1896-1967)**

Advocate and Press lounge suite, circa 1955-56  
model LC/PJ-S1-41-A/B, comprising a pair of lounge chairs and  
sofa; teak, upholstery, painted mark to stretcher of sofa *PSA/CH/028*,  
painted mark to one chair *PSA/CH/030*, and *PSA/CH/029*  
sofa height 30 1/2in (77.5cm); width 65 1/2in (166.5m);  
depth 28in (71cm); each chair height 31in (79cm);  
width 29in (74cm); depth 28in (71cm) (3)

**US\$35,000 - 50,000**

**Provenance**

Private European Collection;  
High Court, Legislative Assembly, and various administrative buildings,  
Chandigarh, India

**Literature**

Eric Touchaleaume, Gerald Moreau, Le Corbusier, Pierre Jeanneret,  
The Indian Adventure, Design-Art-Architecture, Editions Eric  
Touchaleaume, Paris, 2010, page 567.  
Hélène Bauchet-Cauquil, Françoise-Claire Prodhon, Patrick Seguin,  
*Le Corbusier, Pierre Jeanneret, Chandigarh, India, 1951-66*, Galerie  
Patrick Seguin, 2014, page 282.



59



60

**LE CORBUSIER (1887-1965)**

Diablo floor lamp, circa 1963-64

model LC-LU-02-A, for Guilux, steel, aluminum

height 91in (231cm); width 24in (61cm); depth 9 7/8in (25cm)

US\$25,000 - 30,000

**Provenance**

Private European Collection;

Legislative Assembly and Sailing Club, Chandigarh, India

**Literature**

Eric Touchaleaume, Gerald Moreau, *Le Corbusier, Pierre Jeanneret,*

*The Indian Adventure, Design-Art-Architecture,*

Editions Eric Touchaleaume, Paris, 2010, page 599.

Hélène Bauchet-Cauquill, Françoise-Claire Prodhon, Patrick Seguin,

*Le Corbusier, Pierre Jeanneret, Chandigarh, India, 1951-66,*

Galerie Patrick Seguin, 2014, page 290.



60

61

**PIERRE JEANNERET (1896-1967)**

Set of four Upholstered dining chairs, circa 1958  
model PJ-S1-25-E, teak, leather upholstery,  
painted mark to stretcher of each PU/CH/109/008  
height 33in (84cm); width 19 1/4in (49cm); depth 16 1/2in (42cm) (4)

**US\$10,000 - 15,000**

**Provenance**

Private European Collection;  
Punjab University, Chandigarh, India

**Literature**

Eric Touchaleaume, Gerald Moreau, *Le Corbusier, Pierre Jeanneret, The Indian Adventure, Design-Art-Architecture*, Editions Eric Touchaleaume, Paris, 2010, page 561.



61

62

**PIERRE JEANNERET (1896-1967)**

Office table, circa 1957-58

model PJ-BU-02-A, sissoo, leather, aluminum,

painted mark to side PSA/D/49

height 28 1/4in (71.5cm); width 48in (122cm); depth 32 3/4in (83cm)

US\$8,000 - 10,000

**Provenance**

Private European Collection;

Secretariat and various administrative buildings, Chandigarh, India

**Literature**Eric Touchaleaume, Gerald Moreau, *Le Corbusier, Pierre Jeanneret, The Indian Adventure, Design-Art-Architecture*,

Editions Eric Touchaleaume, Paris, 2010, page 573.

Hélène Bauchet-Cauquil, Françoise-Claire Prodhon, Patrick Seguin,

*Le Corbusier, Pierre Jeanneret, Chandigarh, India, 1951-66*,

Galerie Patrick Seguin, 2014, page 288.

63

**SERGE MOUILLE (1922-1988)**

Trepied table lamp, circa 1960

designed 1953, for Ateliers Serge Mouille

enameled steel, enameled aluminum, brass

height 17 1/2in (44.5cm); width 13 1/2in (24.5cm); 11 6/8in (30cm)

US\$7,000 - 9,000

**Provenance**

Private Collection, Europe

**Literature**Christine and Alan Conour, *Serge Mouille Luminaires*,

Le Regard d'Alan Editions, Paris, 1993, unpaginated.

62

63







64

**PHILIP (1907-1987) AND KELVIN LAVERNE (BORN 1937)**

Xiang Shi dining table, circa 1965

acid etched, enameled and patinated bronze, acid etched signature

PHILIP + KELVIN LAVERNE, bearing Philip LaVerne Collections Co.

paper label

height 29 3/4in (75.5cm); length 93 1/2in (237.5cm)

US\$20,000 - 30,000



65

**PAUL EVANS (1931-1987)**

Cityscape cabinet, circa 1975

for *Directional*, chromed metal, wood

height 24 1/2in (82.3cm); length 72in (182.9cm); depth 18in (45.7cm)

US\$6,000 - 8,000

66

**PHILIP (1907-1987) AND KELVIN LAVERNE (BORN 1937)**

The Birth of Venus, circa 1965

acid etched, enameled and patinated bronze three panel scene,

acid etched signature *Philip.K.LAVERNE*

central panel height 31in (78.7cm); length 55in (139.7cm);

side panels height 31in (78.7cm); width 16in (40.7cm) (3)

US\$10,000 - 15,000

67

**JOHN DICKINSON (1919-1982)**

African table, circa 1975

plaster over oak

height 26in (66cm); width 22in (56cm); depth 21 7/8in (55.5cm)

US\$4,000 - 6,000



65





66



67

## CONDITIONS OF SALE

The following Conditions of Sale, as amended by any published or posted notices or verbal announcements during the sale, constitute the entire terms and conditions on which property listed in the catalog shall be offered for sale or sold by Bonhams & Butterfields Auctioneers Corp. and any consignor of such property for whom we act as agent. If live online bidding is available for the subject auction, additional terms and conditions of sale relating to online bidding will apply; see [www.bonhams.com/WebTerms](http://www.bonhams.com/WebTerms) for the supplemental terms. As used herein, "Bonhams," "we" and "us" refer to Bonhams & Butterfields Auctioneers Corp.

1. As used herein, the term "bid price" means the price at which a lot is successfully knocked down to the purchaser. The term "purchase price" means the aggregate of (a) the bid price, (b) a PREMIUM retained by us and payable by the purchaser EQUAL TO 25% OF THE FIRST \$100,000 OF THE BID PRICE, 20% OF THE AMOUNT OF THE BID PRICE ABOVE \$100,000 UP TO AND INCLUDING \$2,000,000, AND 12% OF THE AMOUNT OF THE BID PRICE OVER \$2,000,000, and (c) unless the purchaser is exempt by law from the payment thereof, any California, Arizona, Colorado, Connecticut, Florida, Georgia, Illinois, Massachusetts, Nevada, New York, Pennsylvania, Texas, Washington, D.C., Washington state, or other state or local sales tax (or compensating use tax) and other applicable taxes.

2. On the fall of the auctioneer's hammer, the highest bidder shall have purchased the offered lot in accordance and subject to compliance with all of the conditions set forth herein and (a) assumes full risk and responsibility therefor, (b) if requested will sign a confirmation of purchase, and (c) will pay the purchase price in full or such part as we may require for all lots purchased. No lot may be transferred. Any person placing a bid as agent on behalf of another (whether or not such person has disclosed that fact or the identity of the principal) may be jointly and severally liable with the principal under any contract resulting from the acceptance of a bid.

Unless otherwise agreed, payment in good funds is due and payable within five (5) business days following the auction sale. Whenever the purchaser pays only a part of the total purchase price for one or more lots purchased, we may apply such payments, in our sole discretion, to the lot or lots we choose. Payment will not be deemed made in full until we have collected good funds for all amounts due.

Payment for purchases may be made in or by (a) cash, (b) cashier's check or money order, (c) personal check with approved credit drawn on a U.S. bank, (d) wire transfer or other immediate bank transfer, or (e) Visa, MasterCard, American Express or Discover credit, charge or debit card. A processing fee will be assessed on any returned checks. Please note that the amount of cash notes and cash equivalents that can be accepted from a given purchaser may be limited.

The purchaser grants us a security interest in the property, and we may retain as collateral security for the purchaser's obligations to us, any property and all monies held or received by us for the account of the purchaser, in our possession. We retain all rights of a secured party under the California Commercial Code. If the foregoing conditions or any other applicable conditions herein are not complied with, in addition to other remedies available to us and the consignor by law, including without limitation, the right to hold the purchaser liable for the purchase price, we at our option may either (a) cancel the sale, retaining as liquidated damages all payments made by the purchaser or (b) resell the property, either publicly or privately, and in such event the purchaser shall be liable for

the payment of any deficiency plus all costs and expenses of both sales, our commission at our standard rates, all other charges due hereunder, attorneys' fees, expenses and incidental damages. In addition, where two or more amounts are owed in respect of different transactions by the purchaser to us, to Bonhams 1793 Limited and/or to any of our other affiliates, subsidiaries or parent companies worldwide within the Bonhams Group, we reserve the right to apply any monies paid in respect of a transaction to discharge any amount owed by the purchaser. If all fees, commissions, premiums, bid price and other sums due to us from the purchaser are not paid promptly as provided in these Conditions of Sale, we reserve the right to impose a finance charge equal to 1.5% per month on all amounts due to us beginning on the 31st day following the sale until payment is received, in addition to other remedies available to us by law.

3. We reserve the right to withdraw any property and to divide and combine lots at any time before such property's auction. Unless otherwise announced by the auctioneer at the time of sale, all bids are per lot as numbered in the catalog and no lots shall be divided or combined for sale.

4. We reserve the right to reject a bid from any bidder, to split any bidding increment, and to advance the bidding in any manner the auctioneer may decide. In the event of any dispute between bidders, or in the event the auctioneer doubts the validity of any bid, the auctioneer shall have sole and final discretion either to determine the successful bidder or to re-offer and resell the article in dispute. If any dispute arises after the sale, our sales records shall be conclusive in all respects.

5. If we are prevented by fire, theft or any other reason whatsoever from delivering any property to the purchaser or a sale otherwise cannot be completed, our liability shall be limited to the sum actually paid therefor by the purchaser and shall in no event include any compensatory, incidental or consequential damages.

6. If a lot is offered subject to a reserve, we may implement such reserve by bidding on behalf of the consignor, whether by opening bidding or continuing bidding in response to other bidders until reaching the reserve. If we have an interest in an offered lot and the proceeds therefrom other than our commissions, we may bid therefor to protect such interest. CONSIGNORS ARE NOT ALLOWED TO BID ON THEIR OWN ITEMS.

7. All statements contained in the catalog or in any bill of sale, condition report, invoice or elsewhere as to authorship, period, culture, source, origin, measurement, quality, rarity, provenance, importance, exhibition and literature of historical relevance, or physical condition ARE QUALIFIED STATEMENTS OF OPINION AND NOT REPRESENTATIONS OR WARRANTIES. No employee or agent of Bonhams is authorized to make on our behalf or on that of the consignor any representation or warranty, oral or written, with respect to any property.

8. All purchased property shall be removed from the premises at which the sale is conducted by the date(s) and time(s) set forth in the "Buyer's Guide" portion of the catalog. If not so removed, daily storage fees will be payable to us by the purchaser as set forth therein. We reserve the right to transfer property not so removed to an offsite warehouse at the purchaser's risk and expense, as set forth in more detail in the "Buyer's Guide." Accounts must be settled in full before property will be released. Packing and handling of purchased lots are the responsibility of the purchaser. Bonhams can provide packing and shipping services for certain items as noted in the "Buyer's Guide" section of the catalog.

9. The copyright in the text of the catalog and the photographs, digital images and illustrations of lots in the catalog belong to Bonhams or its licensors. You will not reproduce or permit anyone else to reproduce such text, photographs, digital images or illustrations without our prior written consent.

10. These Conditions of Sale shall bind the successors and assigns of all bidders and purchasers and inure to the benefit of our successors and assigns. No waiver, amendment or modification of the terms hereof (other than posted notices or oral announcements during the sale) shall bind us unless specifically stated in writing and signed by us. If any part of these Conditions of Sale is for any reason invalid or unenforceable, the rest shall remain valid and enforceable.

11. These Conditions of Sale and the purchaser's and our respective rights and obligations hereunder are governed by the laws of the State of California. By bidding at an auction, each purchaser and bidder agrees to be bound by these Conditions of Sale. Any dispute, controversy or claim arising out of or relating to this agreement, or the breach, termination or validity thereof, brought by or against Bonhams (but not including claims brought against the consignor by the purchaser of lots consigned hereunder) shall be resolved by the procedures set forth below.

### MEDIATION AND ARBITRATION PROCEDURES

(a) Within 30 days of written notice that there is a dispute, the parties or their authorized and empowered representatives shall meet by telephone and/or in person to mediate their differences. If the parties agree, a mutually acceptable mediator shall be selected and the parties will equally share such mediator's fees. The mediator shall be a retired judge or an attorney familiar with commercial law and trained in or qualified by experience in handling mediations. Any communications made during the mediation process shall not be admissible in any subsequent arbitration, mediation or judicial proceeding. All proceedings and any resolutions thereof shall be confidential, and the terms governing arbitration set forth in paragraph (c) below shall govern.

(b) If mediation does not resolve all disputes between the parties, or in any event no longer than 60 days after receipt of the written notice of dispute referred to above, the parties shall submit the dispute for binding arbitration before a single neutral arbitrator. Such arbitrator shall be a retired judge or an attorney familiar with commercial law and trained in or qualified by experience in handling arbitrations. Such arbitrator shall make all appropriate disclosures required by law. The arbitrator shall be drawn from a panel of a national arbitration service agreed to by the parties, and shall be selected as follows: (i) If the national arbitration service has specific rules or procedures, those rules or procedures shall be followed; (ii) If the national arbitration service does not have rules or procedures for the selection of an arbitrator, the arbitrator shall be an individual jointly agreed to by the parties. If the parties cannot agree on a national arbitration service, the arbitration shall be conducted by the American Arbitration Association, and the arbitrator shall be selected in accordance with the Rules of the American Arbitration Association. The arbitrator's award shall be in writing and shall set forth findings of fact and legal conclusions.

(c) Unless otherwise agreed to by the parties or provided by the published rules of the national arbitration service:

(i) the arbitration shall occur within 60 days following the selection of the arbitrator;

## CONDITIONS OF SALE - CONTINUED

(ii) the arbitration shall be conducted in the designated location, as follows: (A) in any case in which the subject auction by Bonhams took place or was scheduled to take place in the State of New York or Connecticut or the Commonwealth of Massachusetts, the arbitration shall take place in New York City, New York; (B) in all other cases, the arbitration shall take place in the city of San Francisco, California; and

(iii) discovery and the procedure for the arbitration shall be as follows:

(A) All arbitration proceedings shall be confidential;

(B) The parties shall submit written briefs to the arbitrator no later than 15 days before the arbitration commences;

(C) Discovery, if any, shall be limited as follows: (I) Requests for no more than 10 categories of documents, to be provided to the requesting party within 14 days of written request therefor; (II) No more than two (2) depositions per party, provided however, the deposition(s) are to be completed within one (1) day; (III) Compliance with the above shall be enforced by the arbitrator in accordance with California law;

(D) Each party shall have no longer than eight (8) hours to present its position. The entire hearing before the arbitrator shall not take longer than three (3) consecutive days;

(E) The award shall be made in writing no more than 30 days following the end of the proceeding. Judgment upon the award rendered by the arbitrator may be entered by any court having jurisdiction thereof.

To the fullest extent permitted by law, and except as required by applicable arbitration rules, each party shall bear its own attorneys' fees and costs in connection with the proceedings and shall share equally the fees and expenses of the arbitrator.

### LIMITED RIGHT OF RESCISSION

If within one (1) year from the date of sale, the original purchaser (a) gives written notice to us alleging that the identification of Authorship (as defined below) of such lot as set forth in the **BOLD TYPE** heading of the catalog description of such lot (as amended by any saleroom notices or verbal announcements during the sale) is not substantially correct based on a fair reading of the catalog (including the terms of any glossary contained therein), and (b) within 10 days after such notice returns the lot to us in the same condition as at the time of sale, and (c) establishes the allegation in the notice to our satisfaction (including by providing one or more written opinions by recognized experts in the field, as we may reasonably require), then the sale of such lot will be rescinded and, unless we have already paid to the consignor monies owed him in connection with the sale, the original purchase price will be refunded.

If, prior to receiving such notice from the original purchaser alleging such defect, we have paid the consignor monies owed him in connection with the sale, we shall pay the original purchaser the amount of our commissions, any other sale proceeds to which we are entitled and applicable taxes received from the purchaser on the sale and make demand on the consignor to pay the balance of the original purchase price to the original purchaser. Should the consignor fail to pay such amount promptly, we may disclose the identity of the consignor and assign to the original purchaser our rights against the consignor with respect to the lot the sale of which is sought to be rescinded. Upon such disclosure and assignment, any liability of Bonhams as consignor's agent with respect to said lot shall automatically terminate.

The foregoing limited right of rescission is available to the original purchaser only and may not be assigned to or relied upon by any subsequent transferee of the property sold. The purchaser hereby accepts the benefit of the consignor's warranty of title and other representations and warranties made by the consignor for the purchaser's benefit. Nothing in this section shall be construed as an admission by us of any representation of fact, express or implied, obligation or responsibility with respect to any lot. THE PURCHASER'S SOLE AND EXCLUSIVE REMEDY AGAINST BONHAMS FOR ANY

REASON WHATSOEVER IS THE LIMITED RIGHT OF RESCISSION DESCRIBED IN THIS SECTION.

"Authorship" means only the identity of the creator, the period, culture and source or origin of the lot, as the case may be, as set forth in the **BOLD TYPE** heading of the print catalog entry. The right of rescission does not extend to: (a) works of art executed before 1870 (unless these works are determined to be counterfeits created since 1870), as this is a matter of current scholarly opinion which can change; (b) titles, descriptions, or other identification of offered lots, which information normally appears in lower case type below the **BOLD TYPE** heading identifying the Authorship; (c) Authorship of any lot where it was specifically mentioned that there exists a conflict of specialist or scholarly opinion regarding the Authorship of the lot at the time of sale; (d) Authorship of any lot which as of the date of sale was in accordance with the then generally-accepted opinion of scholars and specialists regarding the same; or (e) the identification of periods or dates of creation in catalog descriptions which may be proven inaccurate by means of scientific processes that are not generally accepted for use until after publication of the catalog in which the property is offered or that were unreasonably expensive or impractical to use at the time of such publication.

### LIMITATION OF LIABILITY

EXCEPT AS EXPRESSLY PROVIDED ABOVE, ALL PROPERTY IS SOLD "AS IS." NEITHER BONHAMS NOR THE CONSIGNOR MAKES ANY REPRESENTATION OR WARRANTY, EXPRESS OR IMPLIED, AS TO THE MERCHANTABILITY, FITNESS OR CONDITION OF THE PROPERTY OR AS TO THE CORRECTNESS OF DESCRIPTION, GENUINENESS, ATTRIBUTION, PROVENANCE OR PERIOD OF THE PROPERTY OR AS TO WHETHER THE PURCHASER ACQUIRES ANY COPYRIGHTS OR OTHER INTELLECTUAL PROPERTY RIGHTS IN LOTS SOLD OR AS TO WHETHER A WORK OF ART IS SUBJECT TO THE ARTIST'S MORAL RIGHTS OR OTHER RESIDUAL RIGHTS OF THE ARTIST. THE PURCHASER EXPRESSLY ACKNOWLEDGES AND AGREES THAT IN NO EVENT SHALL BONHAMS BE LIABLE FOR ANY DAMAGES INCLUDING, WITHOUT LIMITATION, ANY COMPENSATORY, INCIDENTAL OR CONSEQUENTIAL DAMAGES.

## SELLER'S GUIDE

### SELLING AT AUCTION

Bonhams can help you every step of the way when you are ready to sell art, antiques and collectible items at auction. Our regional offices and representatives throughout the US are available to service all of your needs. Should you have any further questions, please visit our website at [www.bonhams.com/us](http://www.bonhams.com/us) for more information or call our Client Services Department at +1 (800) 223 2854 ext. 23550.

### AUCTION ESTIMATES

The first step in the auction process is to determine the auction value of your property. Bonhams' world-renowned specialists will evaluate your special items at no charge and in complete confidence. You can obtain an auction estimate in many ways:

- Attend one of our Auction Appraisal Events held regularly at our galleries and in other major metropolitan areas. The updated schedule for Bonhams Auction Appraisal Events is available at [www.bonhams.com/us](http://www.bonhams.com/us).
- Call our Client Services Department to schedule a private appointment at one of our galleries. If you have a large collection, our specialists can travel, by appointment, to evaluate your property on site.
- Send clear photographs to us of each individual item, including item dimensions and other pertinent information with each picture. Photos should be sent to Bonhams' address in envelopes marked

as "photo auction estimate". Alternatively, you can submit your request using our online form at [www.bonhams.com/us](http://www.bonhams.com/us). Digital images may be attached to the form. Please limit your images to no more than five (5) per item.

### CONSIGNING YOUR PROPERTY

After you receive an estimate, you may consign your property to us for sale in the next appropriate auction. Our staff assists you throughout the process, arranging transportation of your items to our galleries (at the consignor's expense), providing a detailed inventory of your consignment, and reporting the prices realized for each lot. We provide secure storage for your property in our warehouses and all items are insured throughout the auction process. You will receive payment for your property approximately 35 days after completion of sale.

Sales commissions vary with the potential auction value of the property and the particular auction in which the property is offered. Please call us for commission rates.

### PROFESSIONAL APPRAISAL SERVICES

Bonhams' specialists conduct insurance and fair market value appraisals for private collectors, corporations, museums, fiduciaries and government entities on a daily basis. Insurance appraisals, used for insurance purposes, reflect the cost of replacing property in today's retail market. Fair market value appraisals are used for estate,

tax and family division purposes and reflect prices paid by a willing buyer to a willing seller.

When we conduct a private appraisal, our specialists will prepare a thorough inventory listing of all your appraised property by category. Valuations, complete descriptions and locations of items are included in the documentation.

Appraisal fees vary according to the nature of the collection, the amount of work involved, the travel distance, and whether the property is subsequently consigned for auction.

Our appraisers are available to help you anywhere and at any time. Please call our Client Services Department to schedule an appraisal.

### ESTATE SERVICES

Since 1865, Bonhams has been serving the needs of fiduciaries – lawyers, trust officers, accountants and executors – in the disposition of large and small estates. Our services are specially designed to aid in the efficient appraisal and disposition of fine art, antiques, jewelry, and collectibles. We offer a full range of estate services, ranging from flexible financial terms to tailored accounting for heirs and their agents to world-class marketing and sales support.

For more information or to obtain a detailed Trust and Estates package, please visit our website at [www.bonhams.com/us](http://www.bonhams.com/us) or contact our Client Services Department.



BUYER’S GUIDE

BIDDING & BUYING AT AUCTION

Whether you are an experienced bidder or an enthusiastic novice, auctions provide a stimulating atmosphere unlike any other. Bonhams previews and sales are free and open to the public. As you will find in these directions, bidding and buying at auction is easy and exciting. Should you have any further questions, please visit our website at [www.bonhams.com](http://www.bonhams.com) or call our Client Services Department at +1 (800) 223 2854 ext. 3550.

Catalogs

Before each auction we publish illustrated catalogs. Our catalogs provide descriptions and estimated values for each “lot.” A lot may refer to a single item or to a group of items auctioned together. The catalogs also include the dates and the times for the previews and auctions. We offer our catalogs by subscription or by single copy. For information on subscribing to our catalogs, you may refer to the subscription form in this catalog, call our Client Services Department, or visit our website at [www.bonhams.com/us](http://www.bonhams.com/us).

Previews

Auction previews are your chance to inspect each lot prior to the auction. We encourage you to look closely and examine each object on which you may want to bid so that you will know as much as possible about it. Except as expressly set forth in the Conditions of Sale, items are sold “as is” and with all faults; illustrations in our catalogs, website and other materials are provided for identification only. At the previews, our staff is always available to answer your questions and guide you through the auction process. Condition reports may be available upon request.

Estimates

Bonhams catalogs include low and high value estimates for each lot, exclusive of the buyer’s premium and tax. The estimates are provided as an approximate guide to current market value based primarily on previous auction results for comparable pieces, and should not be interpreted as a representation or prediction of actual selling prices. They are determined well in advance of a sale and are subject to revision. Please contact us should you have any questions about value estimates.

Reserves

Unless indicated by the  $\rho$  symbol next to the lot number, which denotes no reserve, all lots in the catalog are subject to a reserve. The reserve is the minimum auction price that the consignor is willing to accept for a lot. This amount is confidential and does not exceed the low estimate value.

Auction House’s Interest in Property Offered at Auction

On occasion, Bonhams may offer property in which it has an ownership interest in whole or in part or otherwise has an economic interest. Such property, if any, is identified in the catalog with a  $\blacktriangle$  symbol next to the lot number(s).

Bonhams may also offer property for a consignor that has been guaranteed a minimum price for its property by Bonhams or jointly by Bonhams and a third party. Bonhams and any third parties providing a guarantee may benefit financially if the guaranteed property is sold successfully and may incur a financial loss if its sale is not successful. Such property, if any, is identified in the catalog with a  $\circ$  symbol next to the lot number(s).

Bidding at Auction

At Bonhams, you can bid in many ways: in person, via absentee bid, over the phone, or via Bonhams’ live online bidding facility. Absentee bids can be submitted in person, online, via fax or via email.

Valid Bonhams client accounts are required to participate in bidding activity. You can obtain registration information online, at the reception desk or by calling our Client Services Department.

By bidding at auction, whether in person or by agent, by absentee bid, telephone, online or other means, the buyer or bidder agrees to be bound by the Conditions of Sale.

Lots are auctioned in consecutive numerical order as they appear in the catalog. Bidding normally begins below the low estimate. The auctioneer will accept bids from interested parties present in the saleroom, from telephone bidders, and from absentee bidders who have left written bids in advance of the sale. The auctioneer may also execute bids on behalf of the consignor by placing responsive or consecutive bids for a lot up to the amount of the reserve, but never above it.

We assume no responsibility for failure to execute bids for any reason whatsoever.

In Person

If you are planning to bid at auction for the first time, you will need to register at the reception desk in order to receive a numbered bid card. To place a bid, hold up your card so that the auctioneer can clearly see it. Decide on the maximum auction price that you wish to pay, exclusive of buyer’s premium and tax, and continue bidding until your bid prevails or you reach your limit. If you are the successful bidder on a lot, the auctioneer will acknowledge your paddle number and bid amount.

Absentee Bids

As a service to those wishing to place bids, we may at our discretion accept bids without charge in advance of auction online or in writing on bidding forms available from us. “Buy” bids will not be accepted; all bids must state the highest bid price the bidder is willing to pay. Our auction staff will try to bid just as you would, with the goal of obtaining the item at the lowest bid price possible. In the event identical bids are submitted, the earliest bid submitted will take precedence. Absentee bids shall be executed in competition with other absentee bids, any applicable reserve, and bids from other auction participants. A friend or agent may place bids on your behalf, provided that we have received your written authorization prior to the sale. Absentee bid forms are available in our catalogs, online at [www.bonhams.com/us](http://www.bonhams.com/us), at offsite auction locations, and at our San Francisco, Los Angeles and New York galleries.

By Telephone

Under special circumstances, we can arrange for you to bid by telephone. To arrange for a telephone bid, please contact our Client Services Department a minimum of 24 hours prior to the sale.

Online

We offer live online bidding for most auctions and accept absentee bids online for all our auctions. Please visit [www.bonhams.com/us](http://www.bonhams.com/us) for details.

Bid Increments

Bonhams generally uses the following increment multiples as bidding progresses:

\$50-200 .....	by \$10s
\$200-500 .....	by \$20/50/80s
\$500-1,000 .....	by \$50s
\$1,000-2,000 .....	by \$100s
\$2,000-5,000 .....	by \$200/500/800s
\$5,000-10,000 .....	by \$500s
\$10,000-20,000 .....	by \$1,000s
\$20,000-50,000 .....	by \$2,000/5,000/8,000s
\$50,000-100,000 .....	by \$5,000s
\$100,000-200,000 .....	by \$10,000s
above \$200,000 .....	at auctioneer’s discretion

**The auctioneer may split or reject any bid at any time at his or her discretion as outlined in the Conditions of Sale.**

Currency Converter

Solely for the convenience of bidders, a currency converter may be provided at Bonhams’ auctions. The rates quoted for conversion of other currencies to U.S. Dollars are indications only and should not be relied upon by a bidder, and neither Bonhams nor its agents shall be responsible for any errors or omissions in the operation or accuracy of the currency converter.

Buyer’s Premium

A buyer’s premium is added to the winning bid price of each individual lot purchased, at the rates set forth in the Conditions of Sale. The winning bid price plus the premium constitute the purchase price for the lot. Applicable sales taxes are computed based on this figure, and the total becomes your final purchase price.

Unless specifically illustrated and noted, fine art frames are not included in the estimate or purchase price. Bonhams accepts no liability for damage or loss to frames during storage or shipment.

All sales are final and subject to the Conditions of Sale found in our catalogs, on our website, and available at the reception desk.

Payment

All buyers are asked to pay and pick up by 3pm on the business day following the auction. Payment may be made to Bonhams by cash, checks drawn on a U.S. bank, money order, wire transfer, or by Visa, MasterCard, American Express or Discover credit or charge card or debit card. All items must be paid for within 5 business days of the sale. Please note that payment by personal or business check may result in property not being released until purchase funds clear our bank. For payments sent by mail, please remit to Cashier Department, 220 San Bruno Avenue, San Francisco, CA 94103.

Sales Tax

California, Arizona, Colorado, Connecticut, Florida, Georgia, Illinois, Nevada, New York, Massachusetts, Pennsylvania, Texas, Washington state and Washington DC residents must pay applicable sales tax. Other state or local taxes (or compensating use taxes) may apply. Sales tax will be automatically added to the invoice unless a valid resale number has been furnished or the property is shipped via common carrier to destinations outside the states listed above.

Shipping & Removal

Bonhams can accommodate shipping for certain items. Please contact our Cashiers Department for more information or to obtain a quote. Carriers are not permitted to deliver to PO boxes.

International buyers are responsible for all import/export customs duties and taxes. An invoice stating the actual purchase price will accompany all international purchases.

Collection of Purchases

Please arrange for the packing and transport of your purchases prior to collection at our office. If you are sending a third party shipper, please request a release form from us and return it to +1 (212) 644 9009 prior to your scheduled pickup. To schedule collection of purchases, please call +1 (212) 644 9001.

Handling and Storage Charges

Please note that our offices have requirements for freight elevator usage. Please contact us to schedule an elevator appointment for pickup of any large or awkward items. Bonhams will hold all purchased lots in our gallery until Tuesday March 22 without penalty. After March 22 collection of lots will be by appointment only. Please call +1 (212) 644 9001 at least 24 hours in advance to make an appointment.

**Storage charges of \$5 per lot, per day will begin accruing for any lots not collected by the 31st day after the auction.** Bonhams reserves the right to remove uncollected sold lots to the warehouse of our choice at the buyer’s risk and expense. Handling and storage fees will apply.

Auction Results

To find out the final purchase price for any lot following the sale, please call our automated auction results line at +1 (800) 223 2854 ext. 3400. All you need is a touch-tone telephone and the lot number. Auction results are usually available on the next business day following the sale or online at [www.bonhams.com/us](http://www.bonhams.com/us).

# CONTACTS

## OFFICERS

Laura King Pfaff  
Chairman

Matthew Girling  
Chief Executive Officer

Leslie Wright  
Vice President, Trusts and Estates

Jon King  
Vice President, Business Development

Vice Presidents, Specialists

Susan F. Abeles

Rupert Banner

Gary Espinosa

Judith Eurich

Alan Fausel

Mark Fisher

Martin Gammon

Dessa Goddard

Jim Haas

Scot Levitt

Mark Osborne

Hadji Rahimpour

Brooke Sivo

Catherine Williamson

## REPRESENTATIVES

### Arizona

Terri Adrian-Hardy, (480) 994 5362

### California - Central Valley

David Daniel, (916) 364 1645

### California - Palm Springs

Brooke Sivo, (760) 350 4255

### Colorado - Denver

Julie Segraves, (720) 355 3737 †

### District of Columbia/Mid-Atlantic

Martin Gammon, (202) 333 1696

### Florida

Jon King

(561) 651 7876, Palm Beach

(305) 228 6600, Miami

(954) 566 1630, Ft. Lauderdale

### Georgia

Mary Moore Bethea, (404) 842 1500

### Illinois

Ricki Harris

(773) 267 3300, (773) 680 2881

### Massachusetts/Boston/New England

Amy Corcoran, (617) 742 0909

### Nevada

David Daniel, (775) 831 0330

### New Mexico

Michael Bartlett, (505) 820 0701

### Oregon and Idaho

Sheryl Acheson, (503) 312 6023

### Texas

Amy Lawch, (202) 333 1696

### Virginia

Gertraud Hechl, (713) 621 5988

### Washington

Heather O'Mahony, (206) 218 5011

### Canada

#### Toronto, Ontario

Jack Kerr-Wilson, (416) 462 9004

#### Montreal, Quebec

David Kelsey, (514) 894 1138 †

## BONHAMS \*

### NEW YORK DEPARTMENTS

**580 Madison Avenue  
New York, New York 10022  
(212) 644 9001**

#### Books & Manuscripts

Christina Geiger, (212) 644 9094

Cassandra Hatton, (212) 461 6531

Brian Kalkbrenner, (917) 206 1625

#### Chinese Works of Art & Paintings

Bruce MacLaren, (917) 206 1677

#### Collectors' Motorcars & Motorcycles

Rupert Banner, (212) 461 6515

Eric Minoff, (917) 206 1630

Evan Ide

#### Fine Art

##### American

Alan Fausel, (212) 644 9039

Kayla Carlsen, (917) 206 1699

##### Contemporary

Jeremy Goldsmith, (917) 206 1656

##### European Paintings

Madalina Lazen, (212) 644 9108

##### Impressionist & Modern

William O'Reilly, (212) 644 9135

#### History of Science

Cassandra Hatton, (212) 461-6531

#### Himalayan Art

Mark Rasmussen, (917) 206 1688

Edward Wilkinson, (917) 206 1688

#### Japanese Works of Art

Jeff Olson, (212) 461 6516

#### Jewelry

Susan F. Abeles, (212) 461 6525

Caroline Morrissey, (212) 644 9046

#### Maritime Paintings & Works of Art

Gregg Dietrich, (212) 644 9001 †

#### Photographs & Prints

Shawna Brickley, (917) 206 1690

#### Russian Fine & Decorative Arts

Yelena Harbick, (212) 644 9136

#### Space History

Cassandra Hatton, (212) 461 6531

#### Trusts & Estates

Sherri Cohen, (917) 206 1671

#### Watches & Clocks

Jonathan Snellenburg, (212) 461 6530

#### Wine & Whisky

Gary D'Urso, (917) 206 1653

## CLIENT SERVICES DEPARTMENT

### San Francisco

(415) 861 7500

(415) 861 8951 fax

### Los Angeles

(323) 850 7500

(323) 850 6090 fax

Monday - Friday, 8.30am to 5pm

## BONHAMS \*

### SAN FRANCISCO DEPARTMENTS

**220 San Bruno Avenue  
San Francisco California 94103  
(800) 223 2854**

#### 20th Century Fine Art

Sarah Nelson, ext. 23311

#### Arms & Armor

Paul Carella, ext. 23360

James Ferrell, ext. 23332

#### Asian Works of Art

Dessa Goddard, ext. 23333

#### Books & Manuscripts

Adam Stackhouse, ext. 23266

#### Decorative Arts

Jennifer Kurtz, ext. 65478

#### Furniture & Decorative Arts, European

Andrew Jones, ext. 65432

#### Jewelry & Watches

Shannon Beck, ext. 23306

#### Collectors' Motorcars & Motorcycles

Mark Osborne, ext. 23353

Jakob Greisen, ext. 23284

#### Museum Services

Laura King Pfaff, ext. 23210

#### Native American Art

Jim Haas, ext. 23294

#### California & Western Paintings & Sculpture

Aaron Bastian, ext. 23241

#### Photographs Prints

Judith Eurich, ext. 23259

#### Oriental Rugs & Carpets

Hadji Rahimpour, ext. 23392

#### Space History

Adam Stackhouse, ext. 23266

#### Trusts & Estates

Victoria Richardson, ext. 23207

#### Wine

Doug Davidson, ext. 23363

#### Writing Instruments

Ivan Briggs, ext. 23255

### New York

(212) 644 9001

(212) 644 9009 fax

Monday - Friday, 9am to 5.30pm

#### Toll Free

(800) 223 2854

## BONHAMS \*

### LOS ANGELES DEPARTMENTS

**7601 W. Sunset Boulevard  
Los Angeles California 90046  
(800) 223 2854**

#### 20th Century Decorative Arts

Angela Past, ext. 65422

Daniel Tolson, ext. 65405

#### 20th Century Fine Art

Alexis Chompaisal, ext. 65469

#### African, Oceanic & Pre-Columbian Art

Fredric W. Backlar, ext. 65416 †

#### Books & Manuscripts

Catherine Williamson, ext. 65442

#### Coins & Banknotes

Paul Song, ext. 65455

#### Entertainment Memorabilia

Lucy Carr, ext. 65467

Dana Hawkes, (978) 283 1518

#### Furniture & Decorative Arts

Andrew Jones, ext. 65432

#### Furniture & Decorative Arts, American

Brooke Sivo, ext. 65420

#### Jewelry & Watches

Dana Ehrman, ext. 65407

Claire De Biasio-Paris, ext. 65483

#### Collectors' Motorcars & Motorcycles

Nick Smith, ext. 65470

#### Contemporary Art

Dane Jensen, ext. 65451

#### Photographs

##### Prints

Morisa Rosenberg, ext. 65435

#### Natural History

Thomas E. Lindgren, ext. 65437 †

Claudia Florian, G.J.G., ext. 65437 †

#### California & Western Paintings & Sculpture

Scot Levitt, ext. 65425

#### Paintings - European

Mark Fisher, ext. 65488

#### Silver

Aileen Ward, ext 65463

#### Trusts & Estates

Leslie Wright, ext. 65408

Joseph Francaviglia, ext. 65443

\* Indicates saleroom  
† Indicates independent contractor

The following information is recorded  
and available 24 hours a day, 7 days a  
week, through our telephone system:

- Auction and Preview Information
- Directions to Bonhams's salesrooms
- Automated Auction Results

# Auction Registration Form

(Attendee / Absentee / Online / Telephone Bidding)

Please circle your bidding method above.

<input type="checkbox"/>	<input type="checkbox"/>	<input type="checkbox"/>	<input type="checkbox"/>
--------------------------	--------------------------	--------------------------	--------------------------

**Paddle number (for office use only)**

**General Notice:** This sale will be conducted in accordance with Bonhams Conditions of Sale, and your bidding and buying at the sale will be governed by such terms and conditions. Please read the Conditions of Sale in conjunction with the Buyer's Guide relating to this sale and other published notices and terms relating to bidding. Payment by personal or business check may result in your property not being released until purchase funds clear our bank. Checks must be drawn on a U.S. bank.

**Notice to Absentee Bidders:** In the table below, please provide details of the lots on which you wish to place bids at least 24 hours prior to the sale. Bids will be rounded down to the nearest increment. Please refer to the Buyer's Guide in the catalog for further information relating to instructions to Bonhams to execute absentee bids on your behalf. Bonhams will endeavor to execute bids on your behalf but will not be liable for any errors or non-executed bids.

**Notice to First Time Bidders:** New clients are requested to provide photographic proof of ID - passport, driving license, ID card, together with proof of address - utility bill, bank or credit card statement etc. Corporate clients should also provide a copy of their articles of association / company registration documents, together with a letter authorizing the individual to bid on the company's behalf. Failure to provide this may result in your bids not being processed. For higher value lots you may also be asked to provide a bankers reference.

**Notice to online bidders:** If you have forgotten your username and password for [www.bonhams.com](http://www.bonhams.com), please contact Client Services.

## If successful

I will collect the purchases myself ☐  
Please contact me with a shipping quote (if applicable) ☐  
I will arrange a third party to collect my purchase(s) ☐

## Please mail or fax the completed Registration Form and requested information to:

Bonhams Client Services Department  
580 Madison Avenue  
New York, New York 10022  
Tel +1 (212) 644 9001  
Fax +1 (212) 644 9009  
Automated Auction Results  
Tel +1 (415) 503 3410

# Bonhams

Sale title: <b>Design</b>	Sale date: <b>Tuesday June 21, 2016</b>
Sale no. <b>23409</b>	Sale venue: <b>New York</b>
<b>General Bid Increments:</b> \$10 - 200 .....by 10s \$200 - 500 .....by 20 / 50 / 80s \$500 - 1,000 .....by 50s \$1,000 - 2,000 .....by 100s \$2,000 - 5,000 .....by 200 / 500 / 800s \$5,000 - 10,000 .....by 500s \$10,000 - 20,000 .....by 1,000s \$20,000 - 50,000 .....by 2,000 / 5,000 / 8,000s \$50,000 - 100,000 .....by 5,000s \$100,000 - 200,000 .....by 10,000s above \$200,000 .....at the auctioneer's discretion The auctioneer has discretion to split any bid at any time.	
Customer Number	Title
First Name	Last Name
Company name (to be invoiced if applicable)	
Address	
City	County / State
Post / Zip code	Country
Telephone mobile	Telephone daytime
Telephone evening	Fax
Telephone bidders: indicate primary and secondary contact numbers by writing ① or ② next to the telephone number.	
E-mail (in capitals) _____ By providing your email address above, you authorize Bonhams to send you marketing materials and news concerning Bonhams and partner organizations. Bonhams does not sell or trade email addresses.	
I am registering to bid as a private client <input type="checkbox"/>	I am registering to bid as a trade client <input type="checkbox"/>
Resale: please enter your resale license number here _____ We may contact you for additional information.	

SHIPPING	
Shipping Address (if different than above):	
Address: _____	Country: _____
City: _____	Post/ZIP code: _____

**Please note that all telephone calls are recorded.**

Type of bid (A-Absentee, T-Telephone)	Lot no.	Brief description (In the event of any discrepancy, lot number and not lot description will govern.) If you are bidding online there is no need to complete this section.	MAX bid in US\$ (excluding premium and applicable tax) Emergency bid for telephone bidders only*

**You instruct us to execute each absentee bid up to the corresponding bid amount indicated above.**

\* Emergency Bid: A maximum bid (exclusive of Buyer's Premium and tax) to be executed by Bonhams only if we are unable to contact you by telephone or should the connection be lost during bidding.

BY SIGNING THIS FORM YOU AGREE THAT YOU HAVE READ AND UNDERSTAND OUR CONDITIONS OF SALE AND SHALL BE LEGALLY BOUND BY THEM, AND YOU AGREE TO PAY THE BUYER'S PREMIUM, ANY APPLICABLE TAXES, AND ANY OTHER CHARGES MENTIONED IN THE BUYER'S GUIDE OR CONDITIONS OF SALE. THIS AFFECTS YOUR LEGAL RIGHTS.

Your signature:

Date:



## INDEX

Arbus, André	16, 21
Barrias, Ernest	9
Cederquist, John	41
Coper, Hans	38, 39
Dickinson, John	67
Doshi, Balkrishna Vithaldas	53
Duckworth, Ruth	36
Evans, Paul	65
Giacometti, Diego	20
Hagenauer, Karl	2
Hoffmann, Josef	4, 5
Jeanneret, Pierre	25, 26, 27, 28, 29, 30, 31, 32, 33, 34, 44, 47, 48, 49, 50, 51, 52, 56, 57, 58, 59, 61, 62
Knox, Archibald	6, 7, 8
Lalique, René	14
Laverne, Philip and Kelvin	64, 66
Le Corbusier	34, 53, 60
Leleu, Jules	18, 19
Mestrovic, Ivan	1
Morris, William C.	40, 42
Mouille, Serge	24, 43, 46, 55, 63
Nakashima, George	45, 54
Printz, Eugene	23
Rie, Dame Lucie	37
Royère, Jean	17
de Santillana, Laura	35
Subes, Raymond	10
Süe et Mare	22
Tiffany Studios	11, 12, 13, 15
Wright, Frank Lloyd	3

EB 1793

**Bonhams**

580 Madison Avenue  
New York, New York 10022

+1 (212) 644 9001  
+1 (212) 644 9009 fax

